

WA 06-165/T-EN54

- Softline design
- Impact-resistant housing
- BS 5839



EN 54-24:2008
Ref. Nr.: 007-13
ID-Code: SAA-LS07
1438-CPR-0231

ic audio GmbH, Boehringerstraße 14a,
D-68307 Mannheim, Germany

CE-Symbol gemäß Richtlinie 93/68EWG

The 6W powered speaker is equipped with a 165mm full-range loudspeaker chassis and a 100V transformer with 3 power adjustments. The high-density, shock-resistant MDF wood housing in white provides a low resonance sound. A sturdy front grille made of steel guarantees enduring stability. For additional reliability, a 2-pin ceramic block, and a thermal fuse are provided and the speaker chassis is impregnated against wetness.

The speaker is also secured with the high protection class IP 54 against the security risks of environmental influences. It is also compliant with the British Standard BS 5839, Part 8.

The proven spring snap fastener on the rear wall ensures quick wall mounting.

Technical Data (Electrical)

Description	WA 06-165/T-EN54
Power	6/3/1,5 W
Impedance (100V)	1667/3333/6667 ohm
Frequency Range	197 - 21.900 Hz
Frequency Response	172 - 23.500 Hz
SPL IEC268-5, 1W/1m	93,0 dB
SPL EN54-24, Pmax/4m	90,0 dB
Sensitivity EN54-24, 1W/4m	81,0 dB
Sensitivity EN54-24, 1W/1m	93,0 dB
Dispersion -6dB, 500Hz	h=180° v=180°
Dispersion -6dB, 1KHz	h=160° v=160°
Dispersion -6dB, 2KHz	h=125° v=125°
Dispersion -6dB, 4KHz	h=89° v=89°

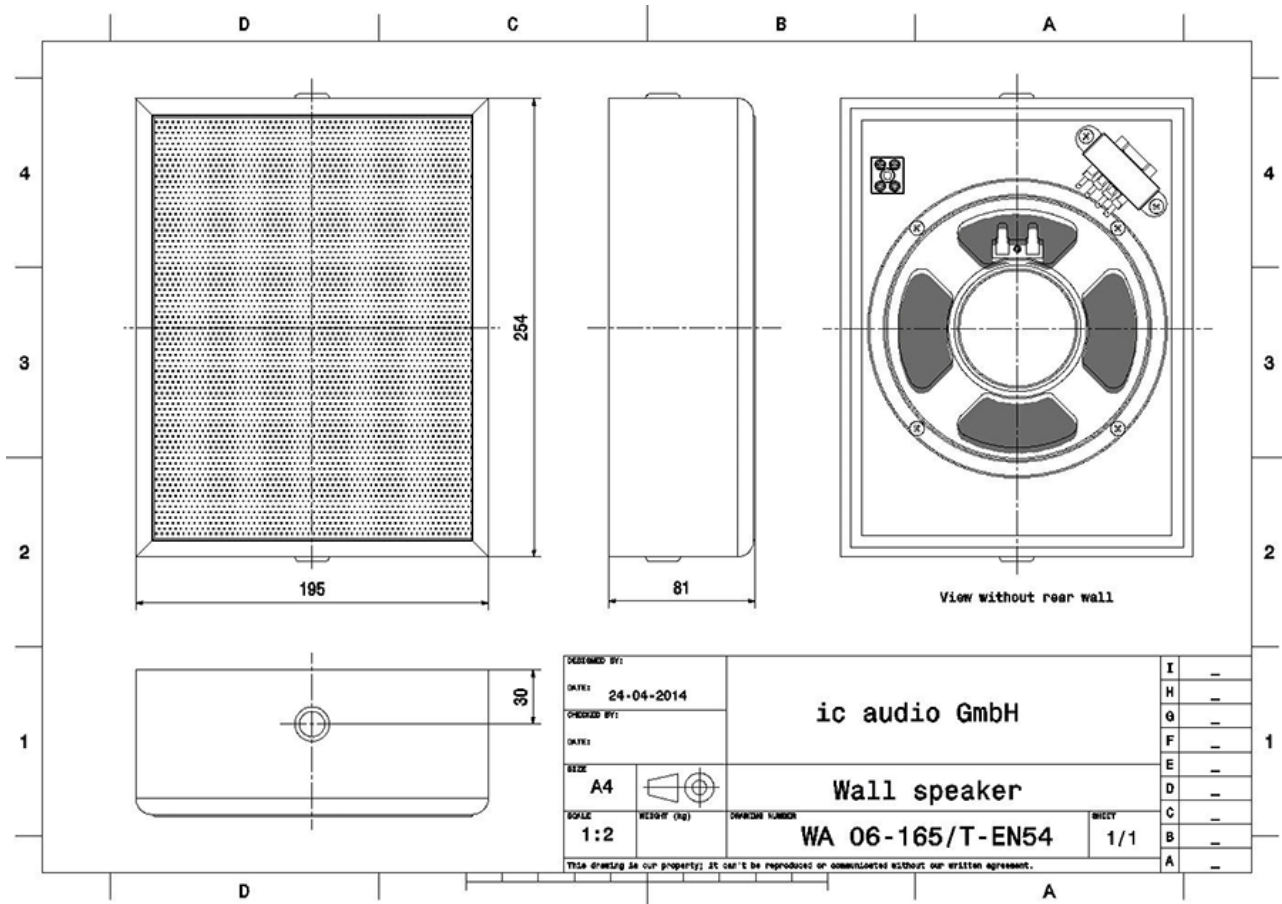
Technical Data (Mechanical)

Dimensions	253x194x82 mm
IP Rating	IP54
Weight (net)	1,95 kg
Temperature range	-10 / +55 C°
Mounting	spring clamp
Connector	2-pin ceramic block
Terminal diameter	3,2 mm
Maximum cable passage	8 mm ²
Colour	white

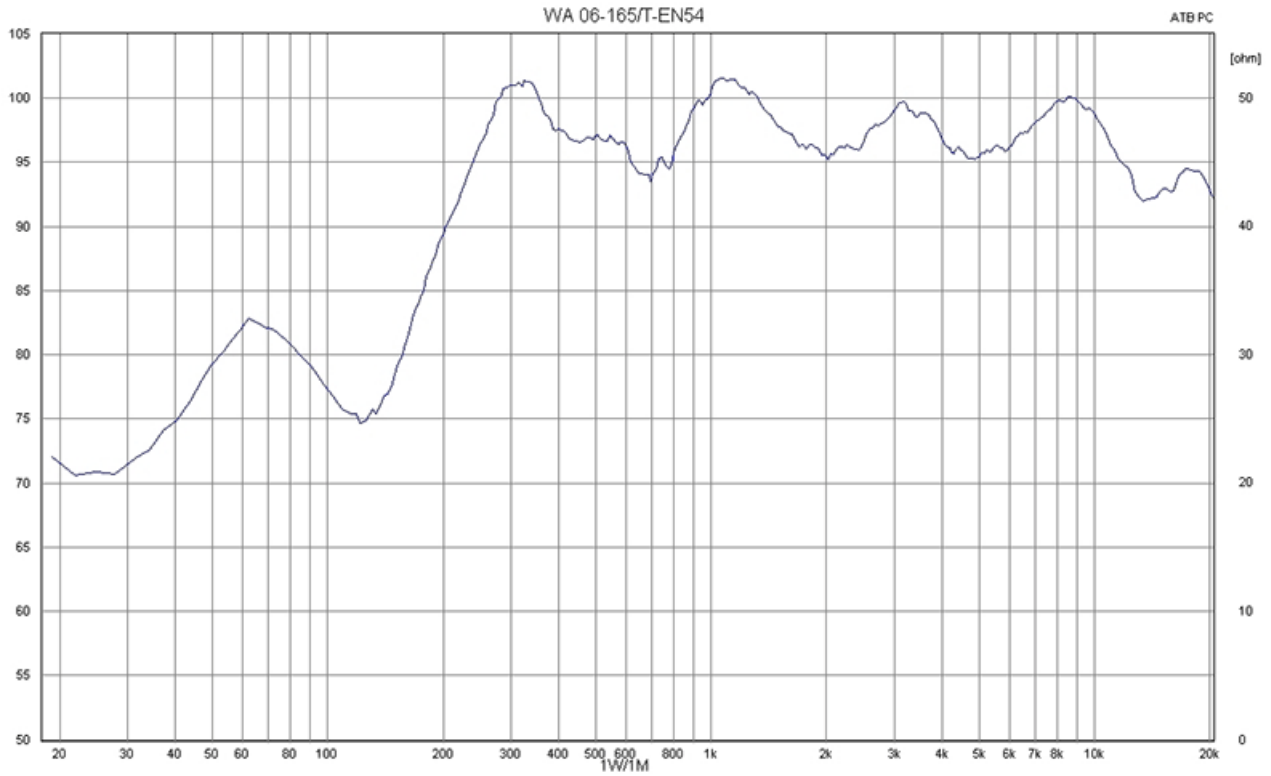
Product Attributes



Technical Diagrams



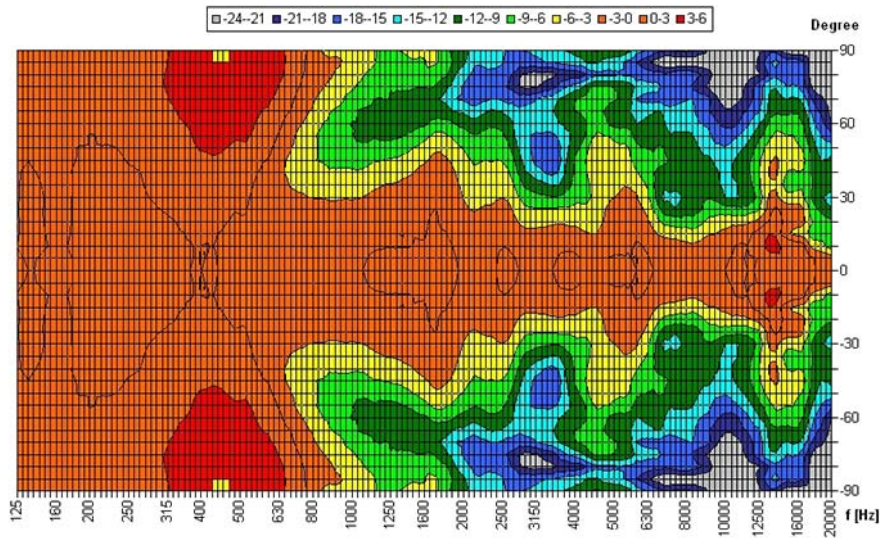
Frequency Response Diagrams



Polar Diagrams

Horizontal Isobars

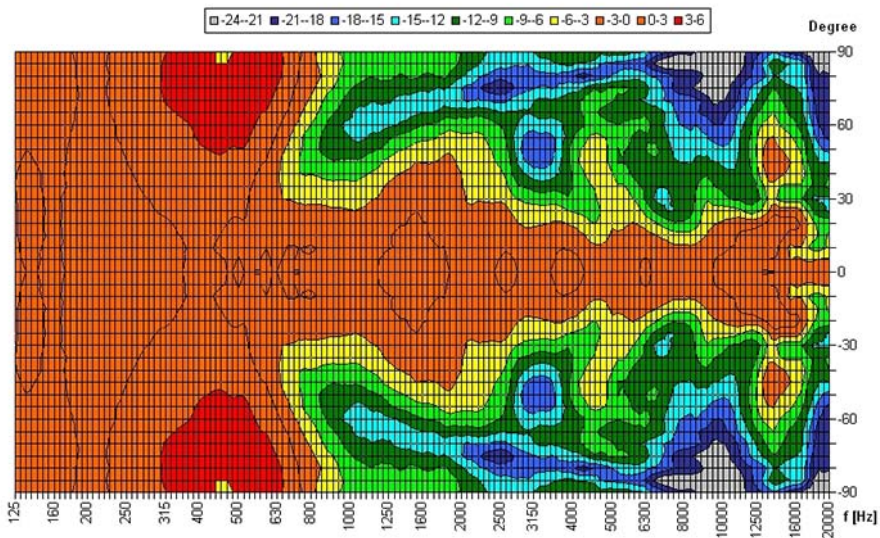
Copyright by Four-Audio GmbH & Co KG Licensed to AAC



Parameters: Cyclic Move: 0° ; Symmetry: 0,+180 sym ; Freq.Smooth: 1/3 Oct ; Ang.Resol: 5° ; Rel. to: 0° Axis 0°

Vertical Isobars

Copyright by Four-Audio GmbH & Co KG Licensed to AAC



Parameters: Cyclic Move: 0° ; Symmetry: 0,+180 sym ; Freq.Smooth: 1/3 Oct ; Ang.Resol: 5° ; Rel. to: 0° Axis 0°

ic audio loudspeakers are tested and classified according to the IEC standard 60529 (degree of protection by enclosure) against the penetration of foreign objects and moisture. The classification is conforming to standards through characterization with a fixed code. This code consists of the letters IP (International Protection) followed by two digits. The first digit indicates the degree of protection against dust and the second digit the degree of protection against water. Please note that the testing of the products has been carried out in laboratory conditions which are not always 100% comparable with the conditions of different installation environments. This protection can be reduced due to normal wear and tear depending on the installation environment.

RoHS compliant (2011/65/EU)

The IP rating specified is based on ic audio test results, not on CNBOP-PIB test results. Certification only verifies the minimum requirements for EN54-24 compliance.



Article Nr.: 20102197

Packing Unit: 8

